

Adding Native Prepar3D V3 Support To UTX Europe V2 products

Step 1: Download The Patch To Add Prepar3D V3 Support

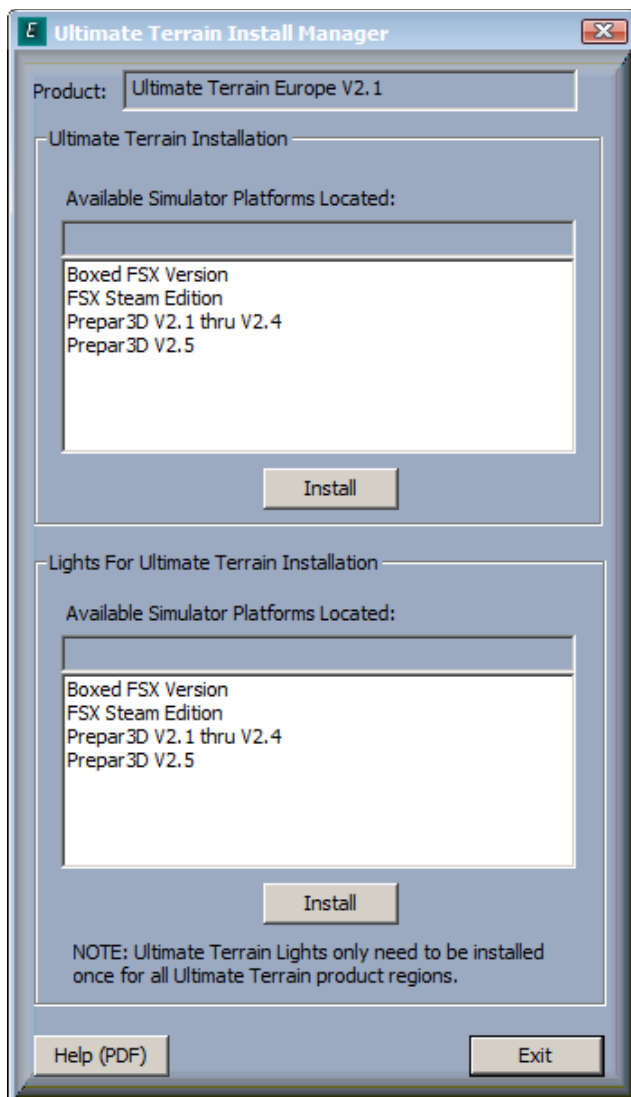
Download the IMUtxEurPatchP3D.exe patch from the link below:

<http://files.100megabyte.com/ultterrain/IMUtxEurPatchP3D3.exe>

Step 2: Partial UTX Europe Install

In this step, we will want to install UTX Europe V2. However, we will stop and exit temporarily after the Install Manager loads. *If you have already installed the UTX Europe V2 Install manager, go to step 3.*

After installing UTX Europe V2, you will see all the available platforms. Since Prepar3D V3 support is not added, press the 'Exit' button to terminate the Install Manager.

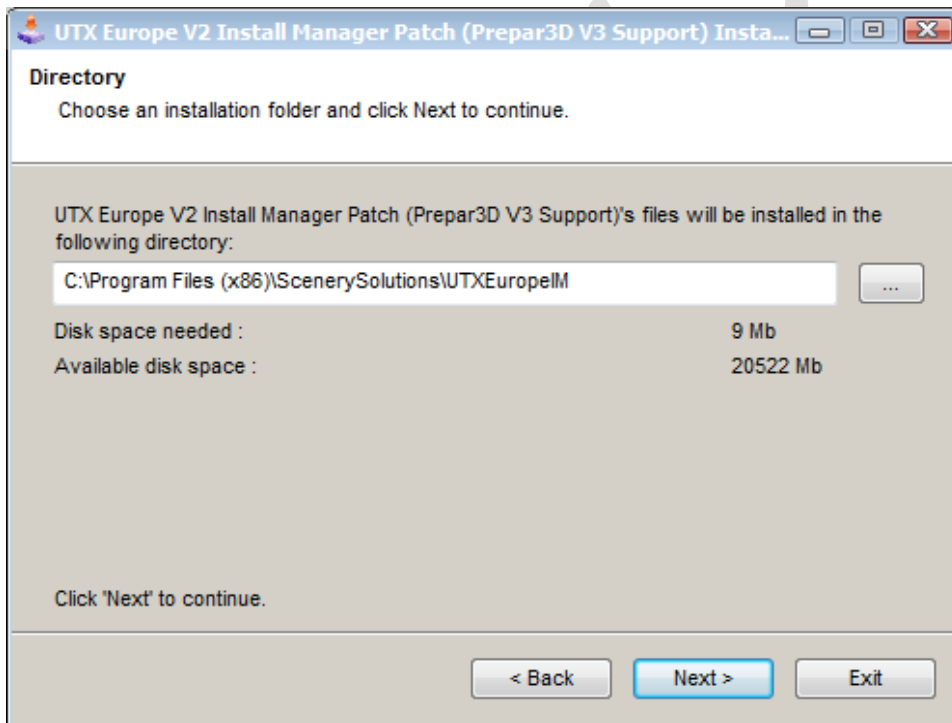


Step 3: Install The Patch

Now you should execute the IMUtxEurPatchP3D3.exe patch that you downloaded in step 1. When the patch starts, you will see the window below.

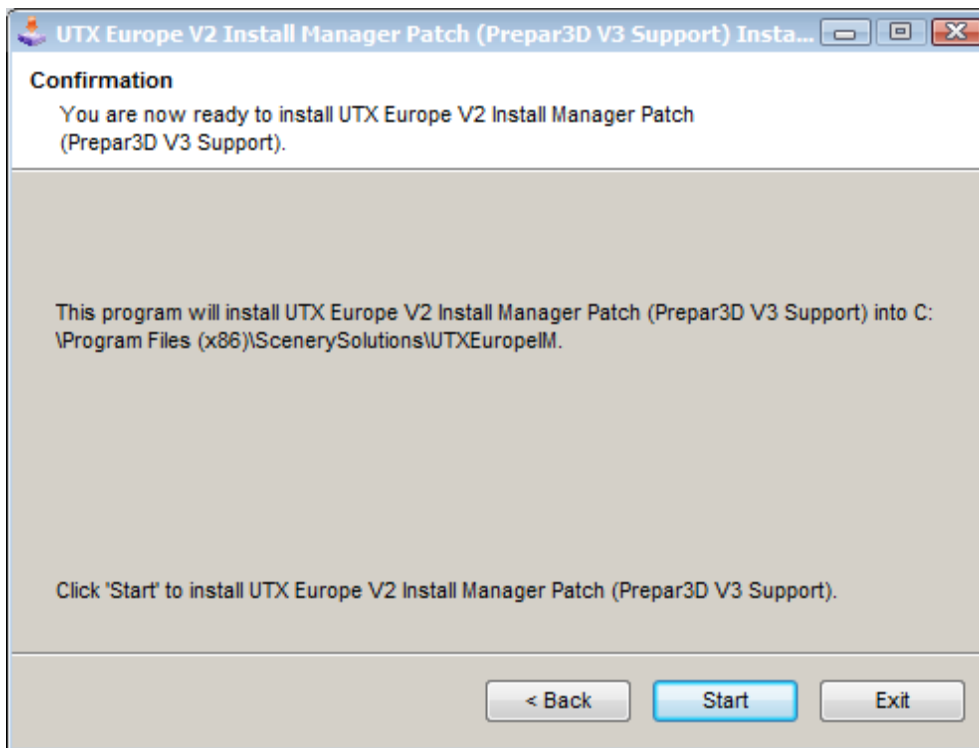


Press the Next button. You will now see the window below that asks you for the current path to the UTX Europe V2 Install Manager folder.



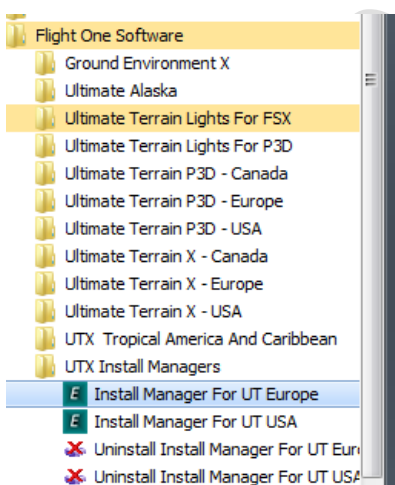
The default Install Manager path for UTX Europe V2 is 'C:\Program Files (x86)\ScenerySolutions\UTXEuropeIM'. If you have not changed the default path when you installed UTX Europe, then press next to continue. If you are not sure if you changed the path, see the Appendix section to locate the Install Manager folder before continuing.

After pressing the 'Next' button to confirm the directory path, you will see the window below. Press the 'Start' button to begin the patch process.



When the patch process is complete, you can restart the "UTX Europe V2 Install Manager" application. If you have Prepar3D V3 installed on your computer, the 'Prepar3d V3' option can be selected and the UTX Europe V2 installation for Prepar3d V3 can begin.

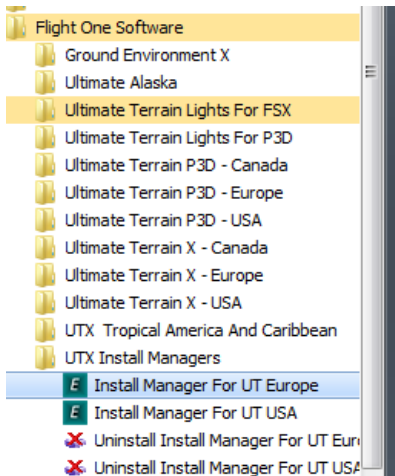
If you don't know how to find the 'Install Manager For UT Europe', you can select it from the Windows Start menu as shown below:



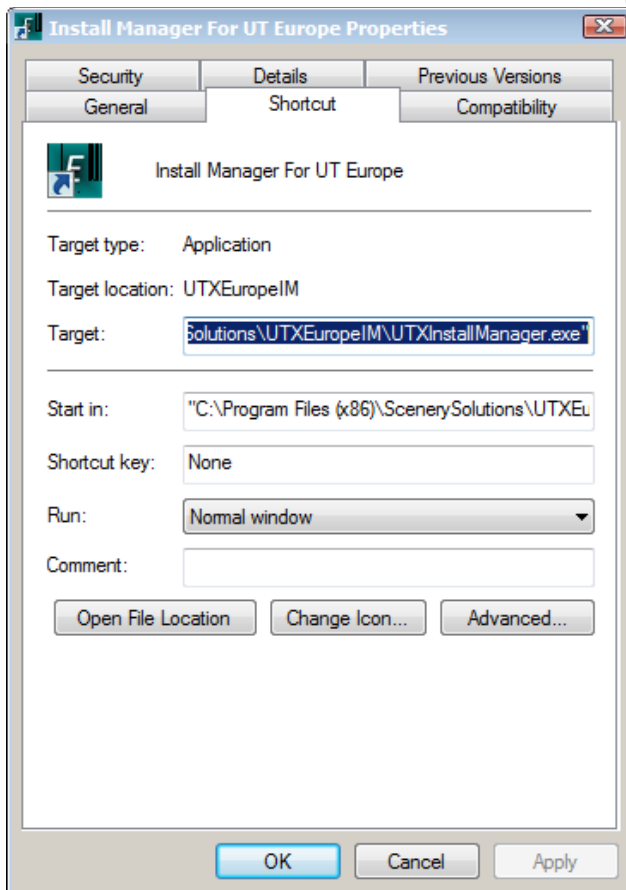
Appendix

Locating The UTX Europe V2 Install Manager Folder

If you are unsure as to where you installed the UTX Europe V2 Install Manager, you can find it through the Windows Start Menu.



Place the cursor over “Install Manager For UT Europe” and press the right mouse button and then select ‘Properties’ from the windows sub-menu. You should see something similar to that on the next page:



The UTX Europe V2 Install Manager folder is displayed as the ‘Target’ in the window above.