

Ultimate Terrain Europe – Eastern Europe Addon

Pre-installation Information

FS2004 breaks all terrain scenery (roads, rails, water, etc) along LOD5 boundaries, with each cell being 3.75 degrees longitude by 2.81 degrees latitude. All Ultimate Terrain scenery products are released along LOD5 boundaries to match the way FS2004 scenery is released. In doing so, we ensure that you will have no loss of scenery when flying in and out of Ultimate Terrain scenery areas.

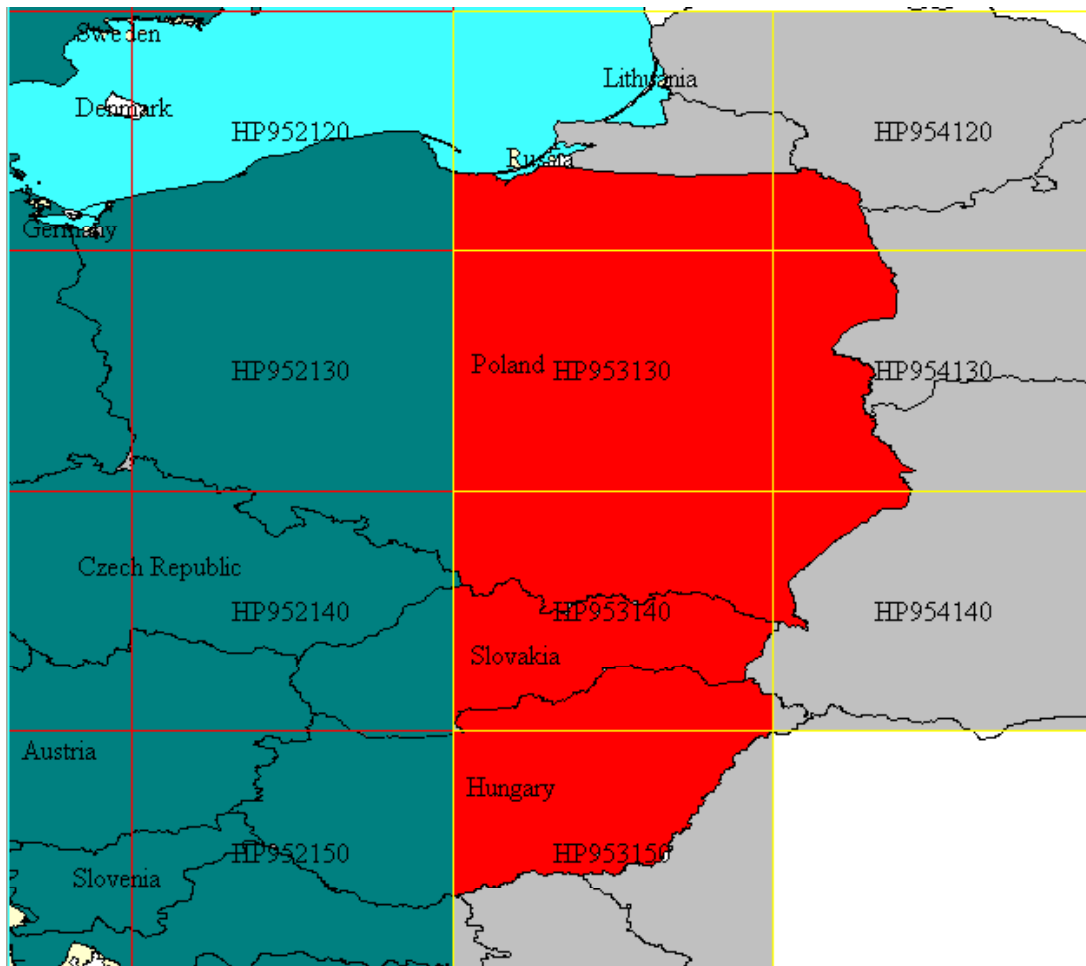
What This Addon Provides

Because we release our Ultimate Terrain Europe product along LOD5 boundaries, it was necessary in Europe to split our official coverage area through the countries of Poland, Hungary and the Slovak Republic. As a result, the base Ultimate Europe product does not contain enhancements for the eastern portion of these countries.

This addon provides the eastern portions of Poland, Hungary and the Slovak Republic, which were intentionally left out of the Ultimate Terrain Europe product to maintain the LOD5 compatibility.

This addon affects 7 FS2004 LOD5 cells, which are bordered by yellow lines in Figure 1. We have enhanced the red areas with improved water, roads, railroads, urban landclass and night lights. Unfortunately, we have no enhanced data available for the gray regions. As a result, you will not see any roads, railroads, water features or urban landclass in these gray portions of these 7 LOD5 cells.

Figure 1



We created the enhanced portions of Poland, Hungary and Slovakia using the remaining data from our TeleAtlas Multinet data set. Because the Slovak Republic is not yet covered by TeleAtlas, except for minimal roads, we have added over 600 hand-drawn water features from satellite imagery for the purposes of this addon. We have also added over 800 hand drawn city boundaries from satellite imagery, to improve the city landclass for the Slovak republic.

We hope you appreciate the extra effort that has gone into this release. However, this is an unofficial patch release, which has gone thru limited testing. Continued support for this addon in the present and future may be limited.

Who May Install This Addon

This addon is a free enhancement for customers that have purchased Ultimate Terrain Europe. Any users that try and install this addon without the full Ultimate Terrain Europe product already installed, will get CTD's (crash to desktop) cases when running FS2004.

License Agreement

NO WARRANTIES. Flight One Software, Inc. and Scenery Solutions expressly disclaims any warranty for the SOFTWARE PRODUCT. The SOFTWARE PRODUCT and any related documentation is provided "as is" without warranty of any kind, either express or implied, including, without limitation, the implied warranties or merchantability, fitness for a particular purpose, or noninfringement. The entire risk arising out of use or performance of the SOFTWARE PRODUCT remains with you.

NO LIABILITY FOR DAMAGES. In no event shall Flight One Software, Inc. and Scenery Solutions or its suppliers be liable for any damages whatsoever (including, without limitation, damages for loss of business profits, business interruption, loss of business information, or any other pecuniary loss) arising out of the use of or inability to use this Flight One Software, Inc. and Scenery Solutions product, even if Flight One Software, Inc. and Scenery Solutions has been advised of the possibility of such damages. Because some states/jurisdictions do not allow the exclusion or limitation of liability for consequential or incidental damages, the above limitation may not apply to you.

Patch Instructions

Download and execute the UTEurEE.EXE patch installer from the Scenery Solutions site. The patch installer will try and locate the folder containing FS2004 from the registry.

The patch installer will create a new scenery folder called UTEUREE\SCENERY. It will also install a new setup tool named SETUPEE.EXE. The SETUPEE application will be stored in the same folder as the current "Ultimate Terrain Europe Setup and Configuration Tool" (SETUP.EXE). The location for the new setup tool will be:

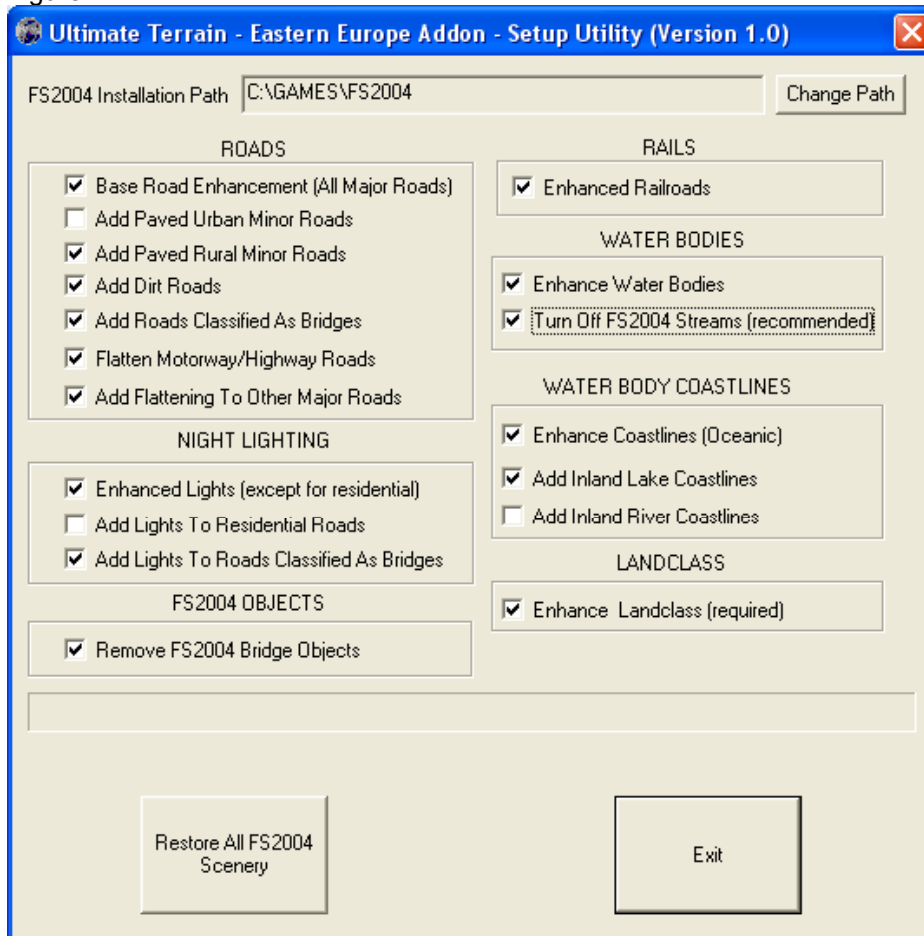
\\Flight One Software\UltimateTerrain\Europe\SetupEE.EXE.

You should probably create a shortcut to the SetupEE.EXE file on your desktop. After the patch installer is complete, you need to execute the SetupEE application. The SetupEE application will automatically add the new scenery area to the FS2004. It will also allow you to configure the various features included in this addon.

This addon will not work correctly until the SetupEE.exe application has been executed at least once !

Figure 2 shows the SetupEE.EXE interface following installation.

Figure 2:



Enjoy,

Scenery Solutions